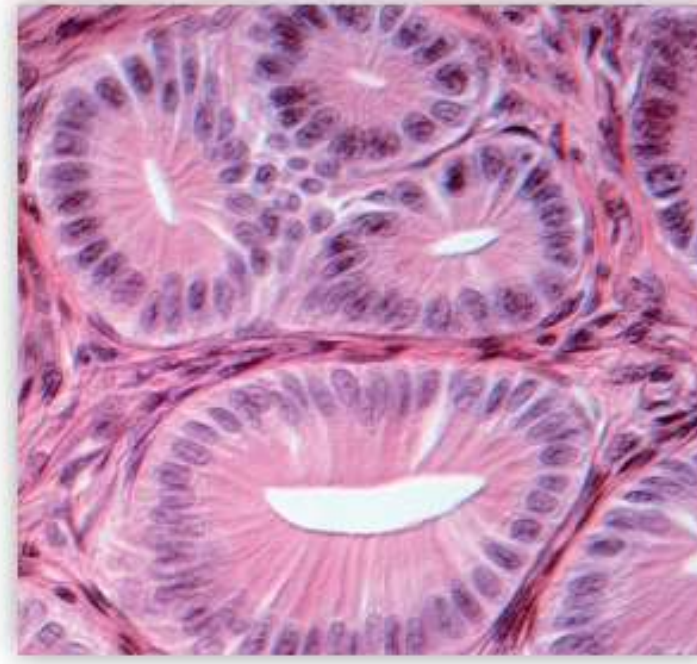
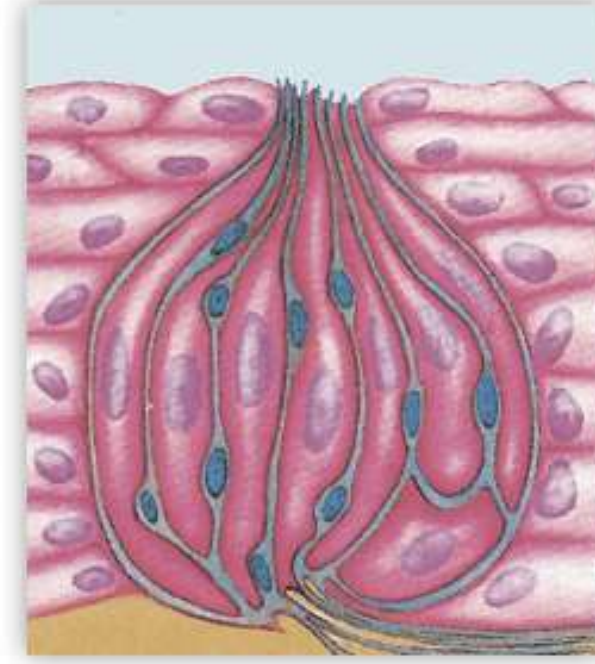




Örtü epiteli

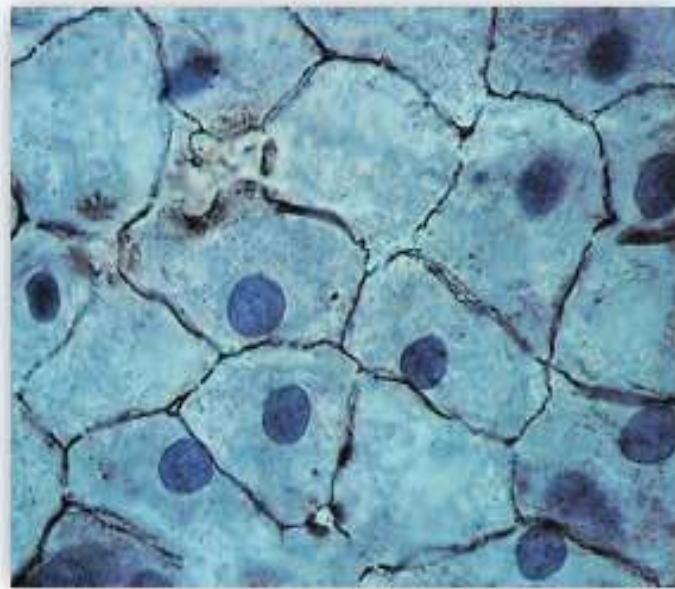


Bez epiteli

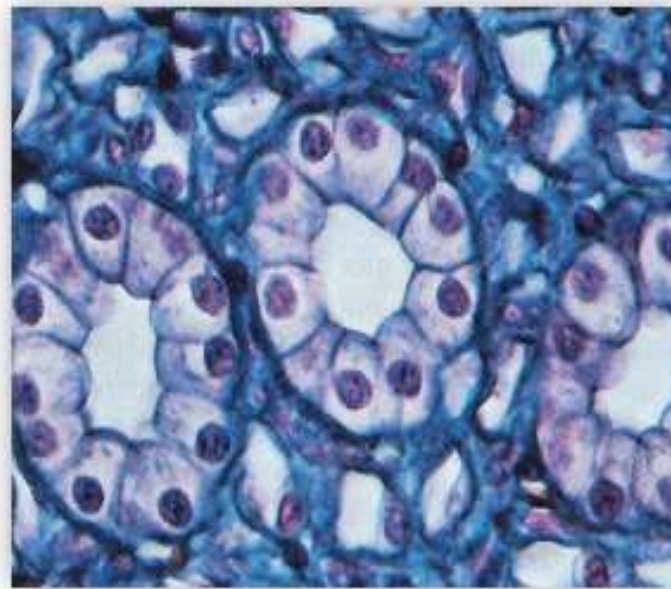


Duyu epiteli

*Epitel doku çeşitleri*



Yassı epitel

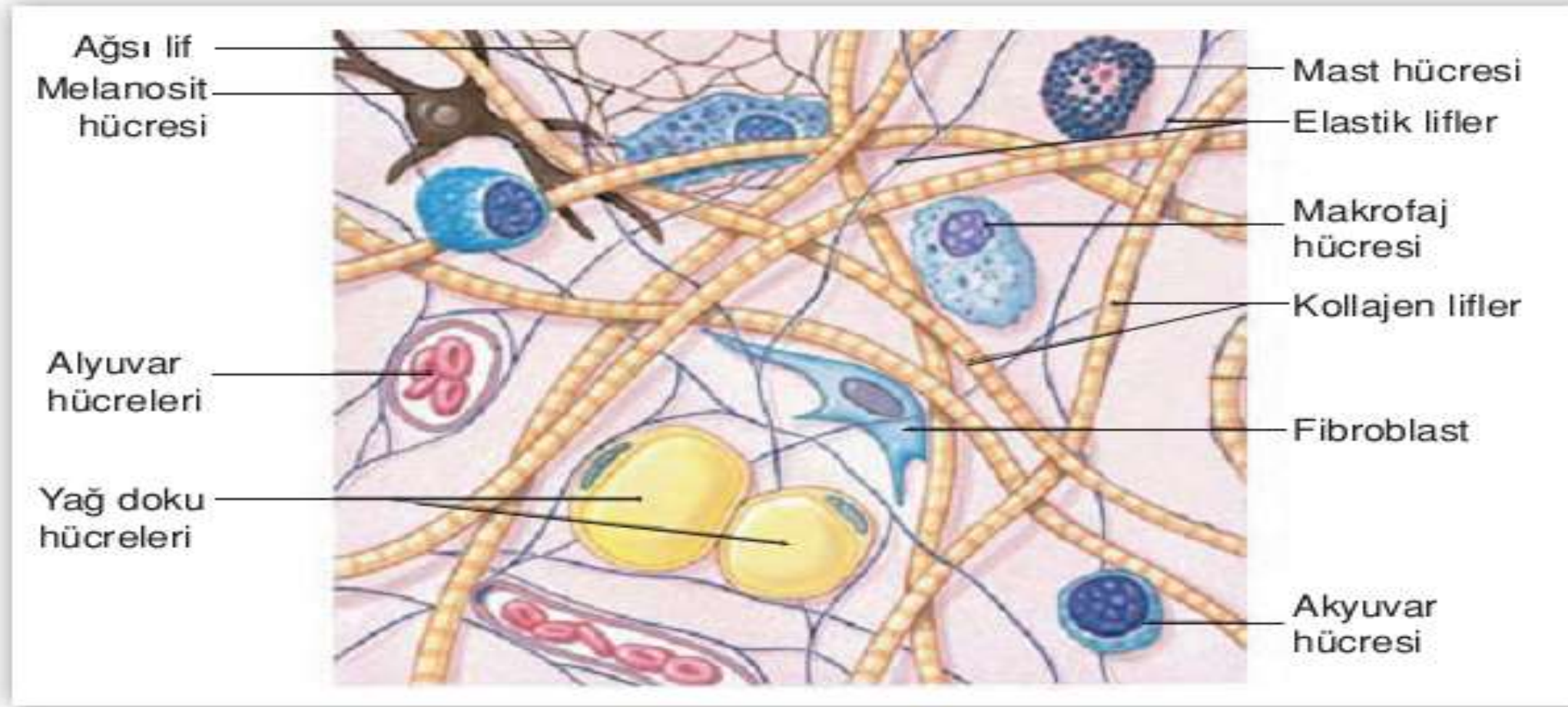


Kübik epitel

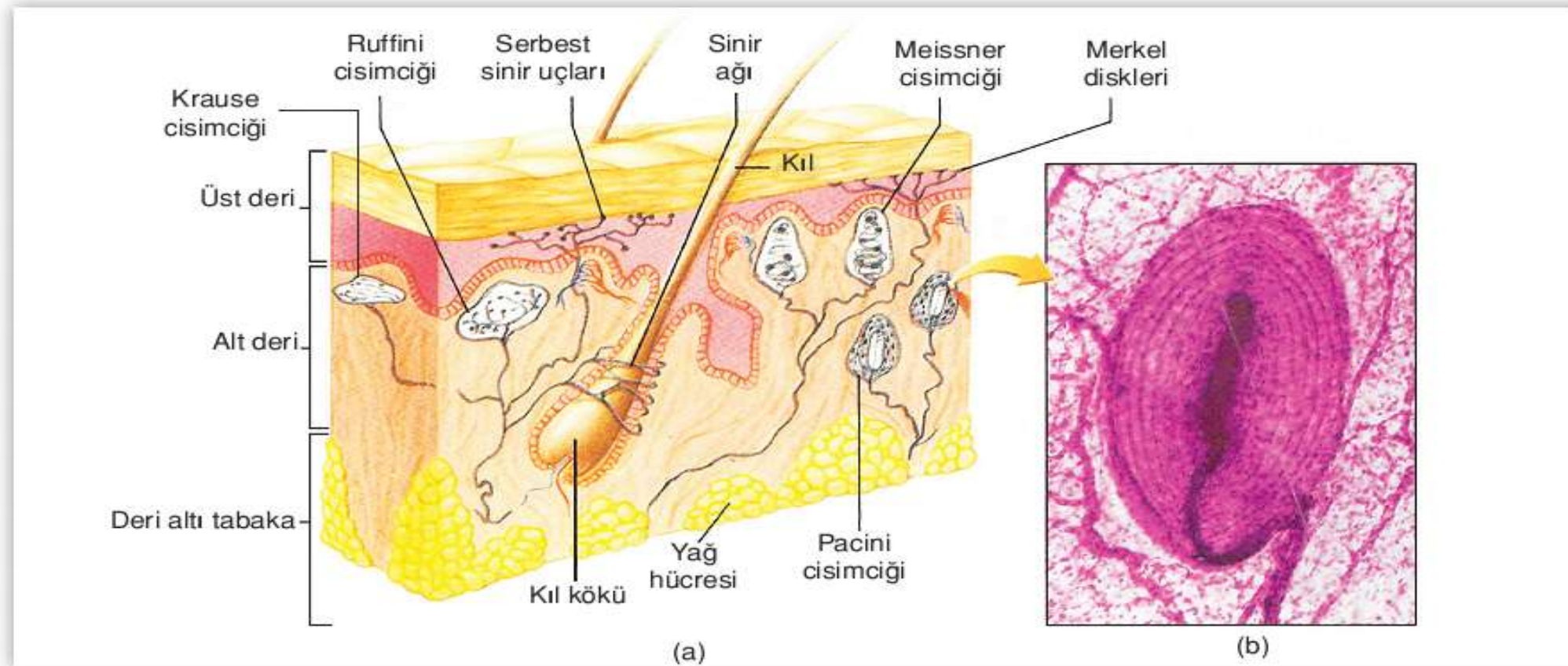


Silindirik epitel

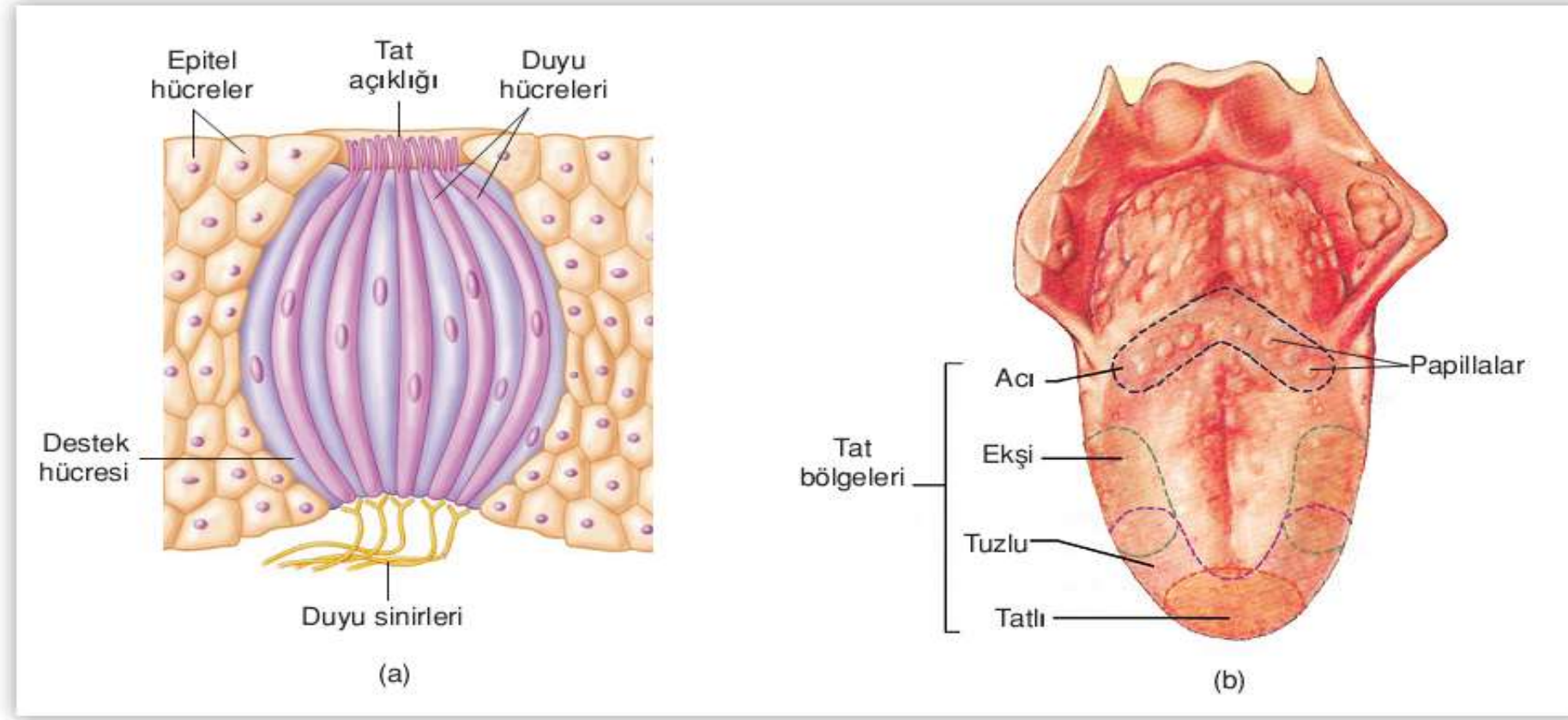
*Tek katlı epitel doku örnekleri*



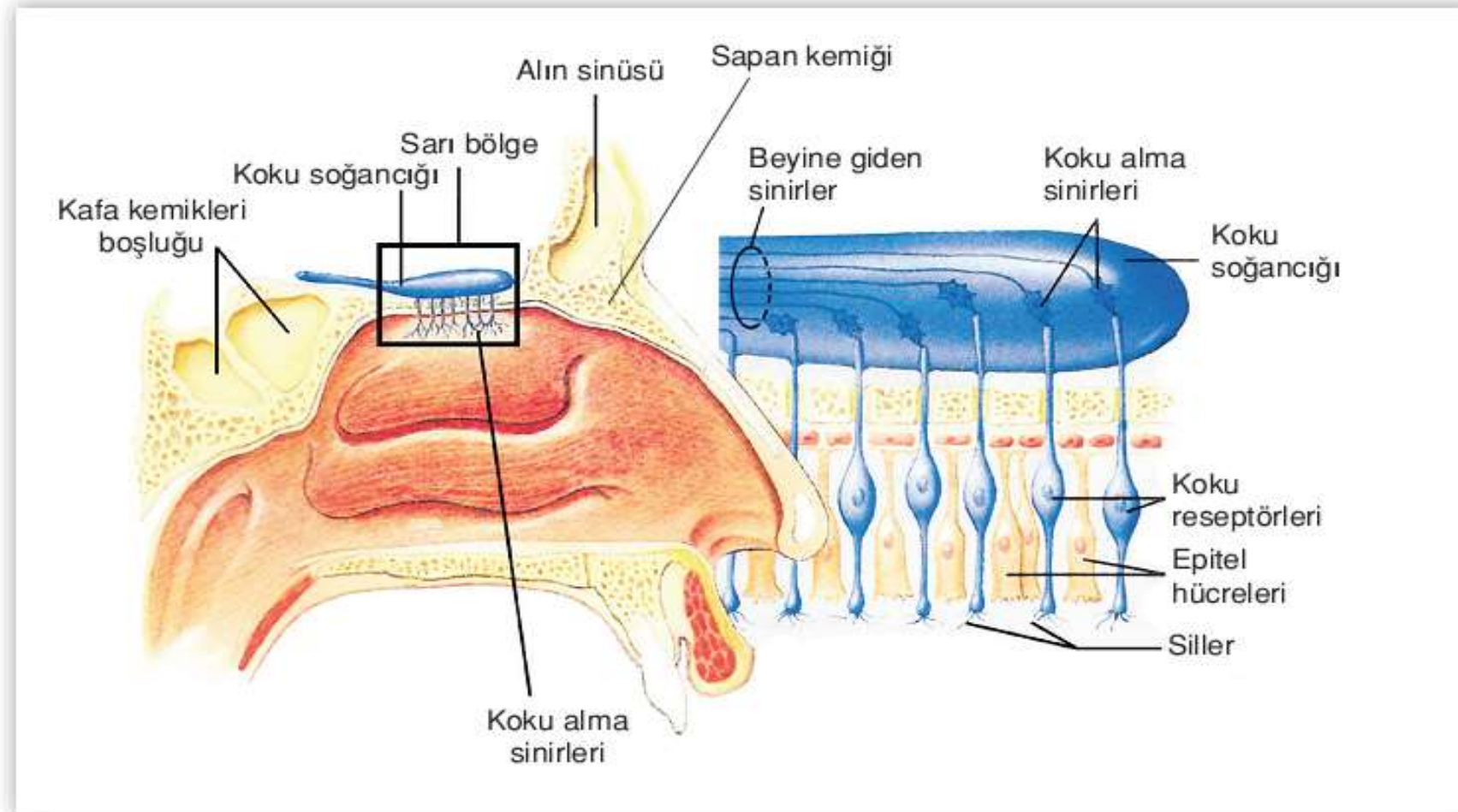
*:Temel bağ dokuda bulunan bazı hücreler ve lifler*



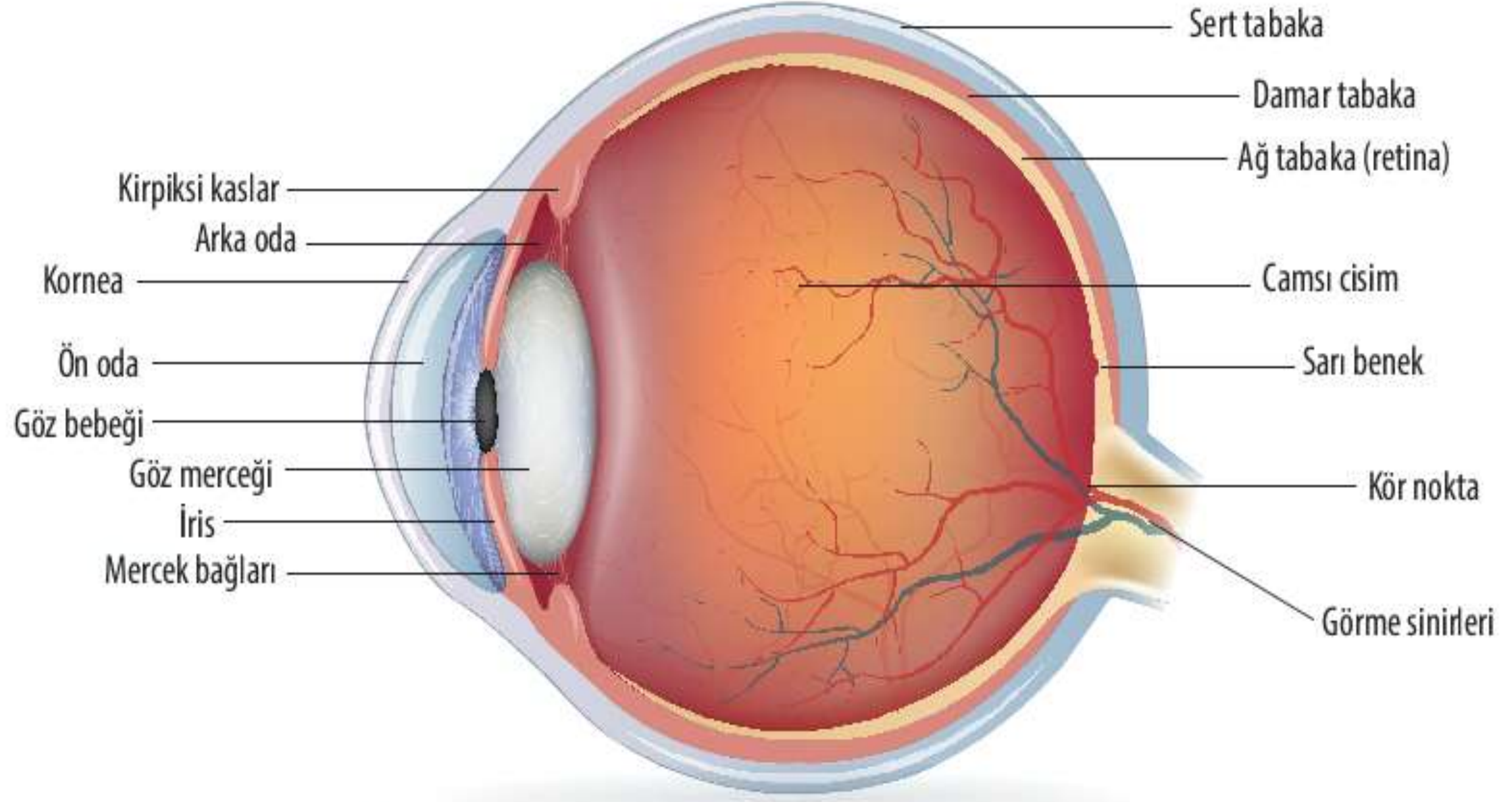
*a) İnsan derisinin enine kesiti b) Basınca duyarlı pacini cisimciği*



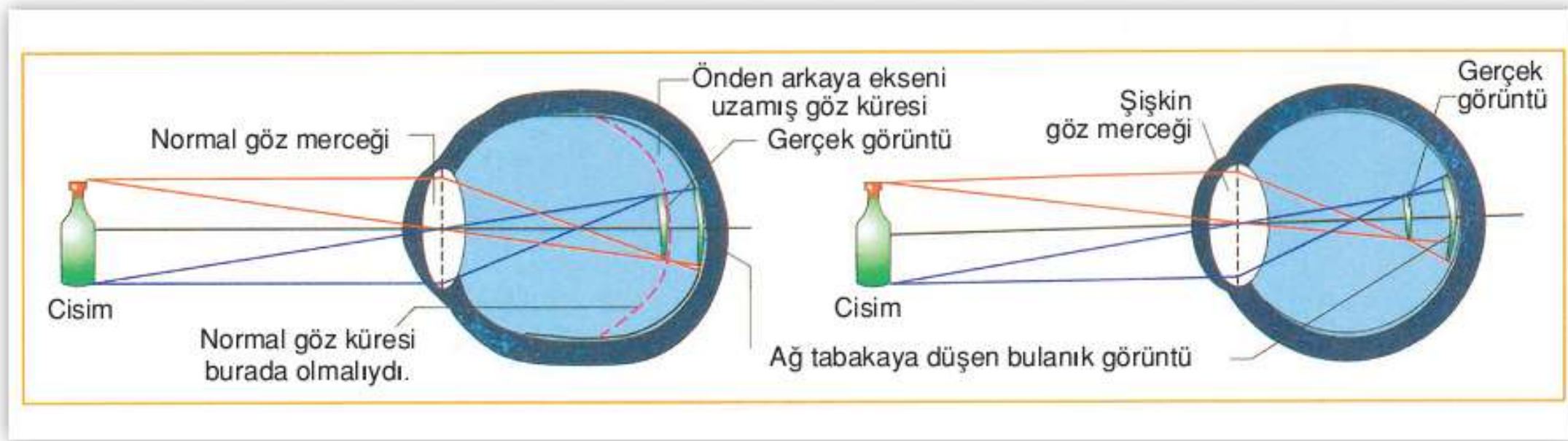
a) Tat tomurcuğu b) Dilde farklı tatların daha yoğun alındığı bölgeler



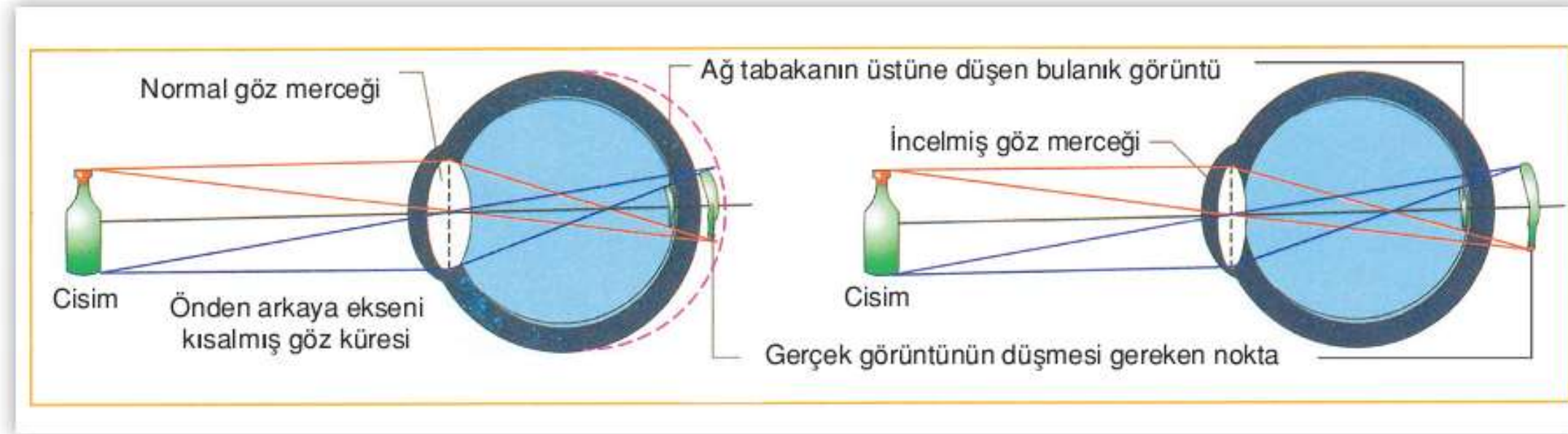
Burunda koku reseptörlerinin yer aldığı sarı bölge



Gözün yapısı



*Miyop göz kusuru*



*Hipermetrop göz kusuru*

